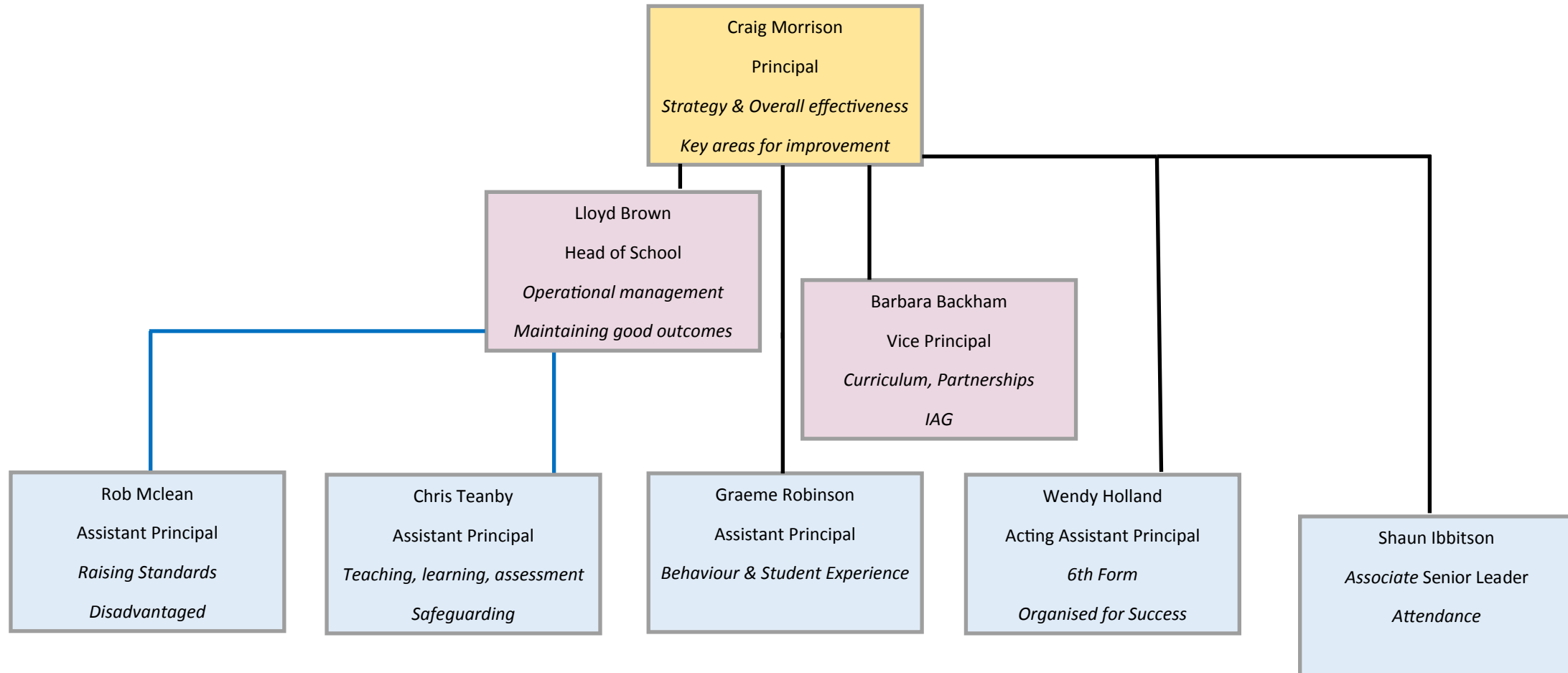


June 2017



Craig Morrison Principal	Lloyd Brown Head of School	Barbara Backham Vice Principal	Rob Mclean Assistant Principal	Chris Teanby Assistant Principal	Graeme Robinson Assistant Principal	Wendy Holland Assistant Principal (Acing)	Shaun Ibbitson Associate Senior Leader
<i>Overall effectiveness</i> <i>Key areas for improvement</i>	<i>Operational management</i> <i>Maintaining good outcomes</i>	<i>Curriculum</i> <i>Partnerships</i> <i>IAG</i>	<i>Raising Standards</i> <i>Disadvantaged</i>	<i>Teaching, learning, assessment</i> <i>Safeguarding</i>	<i>Behaviour</i> <i>Student experience/Voice</i>	<i>6th Form</i> <i>Organised for Success</i> <i>Enrichment</i>	<i>Attendance</i>
Development Planning & Self-evaluation Staffing – appointments, planning, HR Learning environment Partnerships inc Cluster Community involvement Parent engagement Policies Overview Finance & Operations Governance & Trust Quality Assurance	Data and target setting Oversight of achievement Oversee SEN, EAL and Inclusion Standard and consistency of work Monitoring impact of pupil premium spend Attitudes to learning Literacy & Numeracy strategies	Curriculum Design & Extra-curricular Admissions oversight inc student trial/transfer Information, Advice and Guidance Curriculum partners, e.g. College Curriculum strategies & Joint initiatives Options evenings Parents evenings Calendar and planning Diploma and Diploma days, ILPs	Challenge and intervention Pupil Premium strategy Vulnerable groups - performance Recording & Reporting	Monitor teaching and learning Pedagogy development Assessment and marking Appraisal & Observation process EVC – trips and visits Safeguarding Looked After Children	Behaviour for learning Student voice and leadership Transition & primary links (cluster) Rewards & Sanctions FSP Short Stay School links	6th Form House system and enrichment SMSC PSHE FBV Organised for Success	High standards of attendance Attendance interventions Punctuality Mid-year admissions
Manages: Lloyd Brown Barbara Backham Graeme Robinson Shaun Ibbitson Wendy Holland	Manages: Rob Mclean Chris Teanby Stewart Thomas (English) James Crockett (Maths) Mike Mallett (Science) Micarla Holmes (SENCO)	Manages: Chris Surrage (TT) Will Blake (Tech) Leah Hawkins (MFL) Alex Spindler (Psychology) Mandy Price (Vocational)	Manages: Standards Leaders (Y7-Y11) Jody Walters (PE) Matt Taylor (IT) Business Studies	Manages: Michaela Buckland (Drama) Steve Hogger (Humanities) Mariegold Nicholls (Music) James Dixon (Art) Leah Hawkins (Professional Tutor)	Manages: Heads of Year Student Support Centre staff	Manages: Alistair White (6th Form) John Chappell (6th Form) Enrichment co-ordinators PSHE tutors (also English staff)	Manages: Attendance team